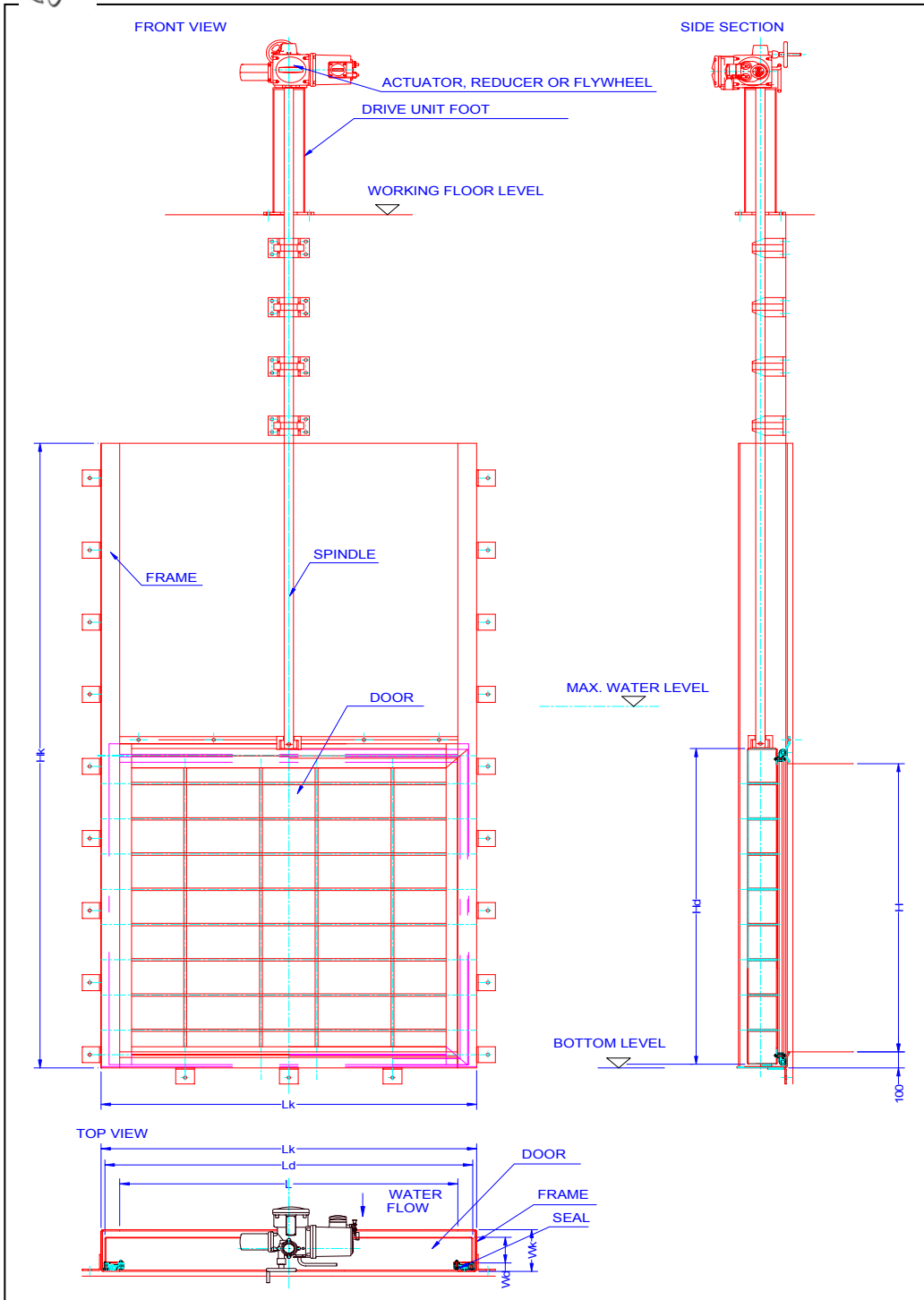




**MIS** Makina, İnşaat, Sanayi Ltd. Şti.

# Pen Stocks and Weirs



## SPECIFICATION:

### Frame:

Stainless Steel  
AISI 304  
AISI 304L  
AISI 316  
AISI 316L

### Door:

Mild Steel  
Stainless Steel  
AISI 304  
AISI 304L  
AISI 316  
AISI 316L

### Spindle:

Stainless Steel  
AISI 329

### Seal:

EPDM - P Type  
EPDM - V Type  
Co-Plastic

### Actuator Food:

Mild Steel  
Stainless Steel  
AISI 304  
AISI 304L  
AISI 316  
AISI 316L

